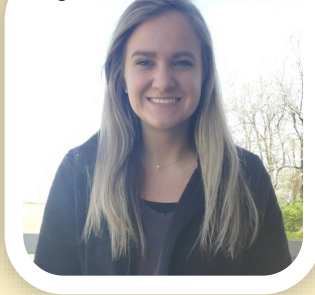


Mary Dossett

Agent for Horticulture



Horticulture Newsletter

**APRIL
2024**

Inside this issue:

- Pre-emergence Herbicide Timing in Kentucky Lawns
- Spinach Pasta Bake
- Total Solar Eclipse Will Dazzle on April 8th
- How to Properly Manage the Damage Caused by Brown Marmorated Stink Bugs
- Toolbox-April 2nd Homesteading 5p.m.
- Solar Eclipse Watch Party April 8th
- Grounding Yoga by Sierra Irwin at Pat & Jim Brockenborough Rotary Health Park
- Gardening 101 April 25th at 5p.m.
- Horticulture Walking Club at Greenway Trail

Master Gardener Spotlight

Katana Darnell



Class of 2017



Cooperative Extension Service

Agriculture and Natural Resources
Family and Consumer Sciences
4-H Youth Development
Community and Economic Development

MARTIN-GATTON COLLEGE OF AGRICULTURE, FOOD AND ENVIRONMENT

Educational programs of Kentucky Cooperative Extension serve all people regardless of economic or social status and will not discriminate on the basis of race, color, ethnic origin, national origin, creed, religion, political belief, sex, sexual orientation, gender identity, gender expression, pregnancy, marital status, genetic information, age, veteran status, physical or mental disability or reprisal or retaliation for prior civil rights activity. Reasonable accommodation of disability may be available with prior notice. Program information may be made available in languages other than English. University of Kentucky, Kentucky State University, U.S. Department of Agriculture, and Kentucky Counties, Cooperating. Lexington, KY 40506



Disabilities
accommodated
with prior notification.

Pre-emergence Herbicide Timing in Kentucky Lawns

Spring has arrived a little earlier this year, which often brings about an increase in questions about the home lawn, particularly the timing of applying pre-emergence herbicides. While crabgrass seed germination can be somewhat erratic, research shows that it will begin when soil temperatures at 2" reach 57 degrees consistently. The majority of germination will take place when the soil temperatures are between 60-70 degrees Fahrenheit. Because these herbicides prevent the seedlings of warm season grasses from emerging and do not control the grasses after emergence it is always better to be too early than too late. For this reason, our recommendation is to apply pre-emergence herbicides to the lawn when the average soil temperature at 2 inches is between 50-55 degrees for 5 consecutive days. We are already there across much of the state and if the forecast holds, we will continue warming in the next couple of weeks. Our indicator plants are also telling us that it is time to make applications. Here are forsythia and daffodils in Madison Co. on 3/7/2023. Below I have included soil temps through 3/7/2024 for several areas around the state and a link to our pre-emergence extension publication. If you have any questions, please reach out to me.

5 Day Avg. Soil Temps at 2"

March 3rd – March 7th 2024

Boone – 52
 Fayette – 53
 Harlan – 49
 Warren – 55
 Christian – 58



AGR-272 - "Preemergence Herbicides for Kentucky Lawns" <https://www2.ca.uky.edu/agcomm/pubs/AGR/AGR272/AGR272.pdf>

Kenneth Clayton, Extension Associate in Turfgrass



Spinach Pasta Bake

2 cups whole wheat penne pasta	1½ teaspoons dry basil	1 can (14 ounces) Italian diced tomatoes, drained
1 pound lean ground beef	1 teaspoon garlic powder	10 ounces fresh spinach, chopped
1 large onion, chopped	1 teaspoon dried oregano	1 cup low-fat shredded Mozzarella cheese
1 large carrot, shredded		
1 teaspoon black pepper		

Preheat oven to 350 degrees F. **Cook** pasta according to package directions. **Drain** and **cover** to keep warm. In a large skillet over medium heat, **cook** the beef and onions until beef is no longer pink. **Drain.** **Return** beef to skillet. **Add** carrots and spices and **cook** an additional two minutes. **Stir** in tomatoes. **Reduce** heat to low. **Cover** and **simmer** 10 minutes. **Add** pasta and

spinach and mix well. **Cover** and **cook** an additional 3 minutes or until spinach is wilted. **Pour** into greased 3-quart baking dish. **Sprinkle** with Mozzarella cheese. **Bake,** uncovered for 10 minutes.

Yield: 9, 1 cup servings

Nutritional Analysis: 200 calories, 4.5 g fat, 2 g saturated fat, 35 mg cholesterol, 270 mg sodium, 25 g carbohydrate, 4 g fiber, 4 g sugars, 18 g protein.



Buying Kentucky Proud is easy. Look for the label at your grocery store, farmers' market, or roadside stand.

<http://plateitup.ca.uky.edu>



Total Solar Eclipse Will Dazzle on April 8th!

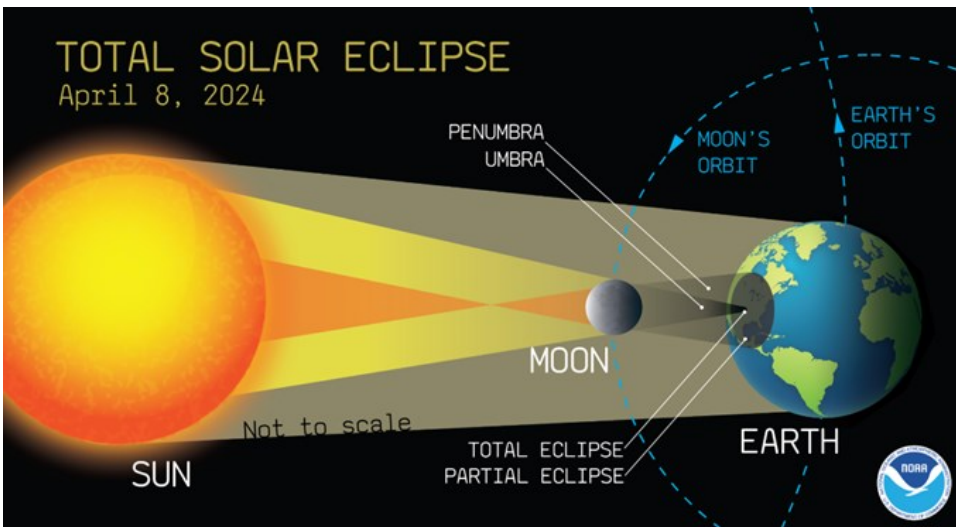
By Jane Marie Wix – National Weather Service Jackson, KY
and Derrick Snyder - National Weather Service Paducah, KY



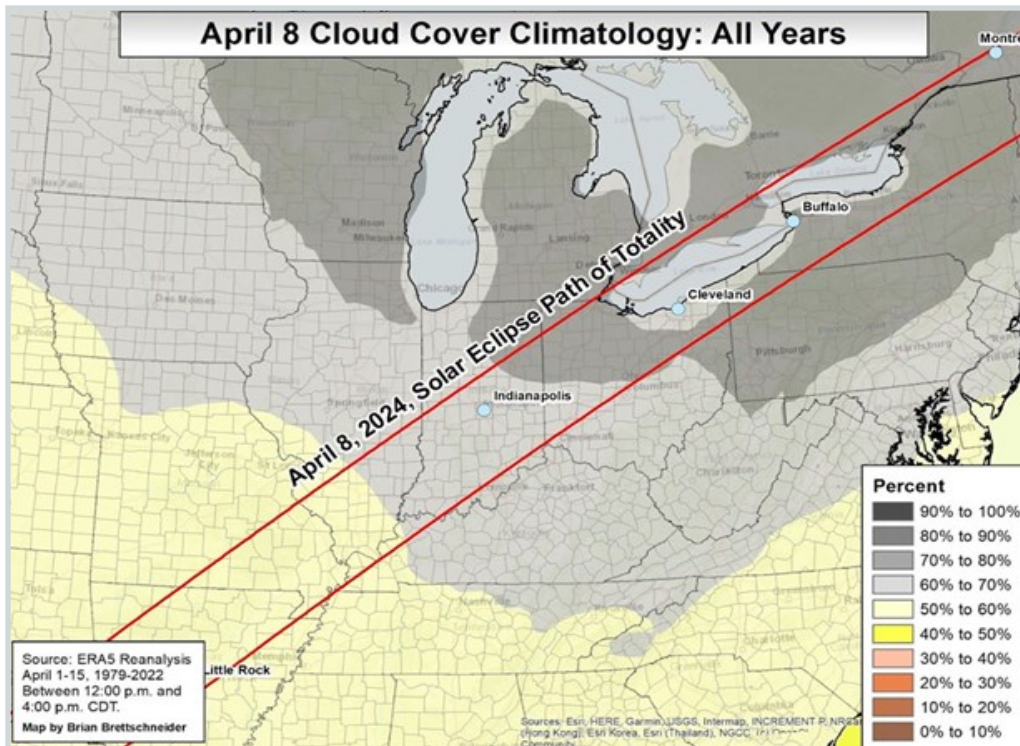
During the afternoon hours of Monday, April 8th, a spectacular celestial event will pass through the country – a total solar eclipse of the sun! The eclipse on April 8th will cross a good part of the southern, central, and northeastern portion of the country, including portions of far Western Kentucky. A large part of the Ohio River on the west half of the Commonwealth will be just outside of the totality. The map below is courtesy of the National Aeronautics and Space Administration (NASA) and shows the path of the eclipse and what time it will reach locations in its path. For places in the path of totality (where the Sun will be completely obscured by the Moon), the sun will be covered between roughly two and four minutes.



Why do eclipses occur anyway? On Earth, the Sun appears about 400 times larger in the sky than the Moon does. However, the Sun is also about 400 times further away from Earth than the Moon is. This unique planetary positioning allows for special occurrences where the Moon perfectly obscures the Sun in what we call an eclipse. Solar eclipses only occur when the positions of the Sun and Moon align just right to block the sun. This alignment happens rarely because the orbit of the Moon around Earth is not a perfect circle. In reality it is more like an oval. For this reason, the next total solar eclipse visible in the U.S. will not be until 2033 in Alaska!



Will the weather cooperate for the eclipse? The biggest obstacle to seeing a solar eclipse is cloud cover. The timing of the eclipse in early April presents a challenge, as this can be a cloudy time of year in much of the country, including across Kentucky. The map below shows the typical amount of cloud cover present on April 8th in Kentucky and surrounding states. Most areas usually have at least half of the sky covered by clouds, and locations near the Great Lakes can see much cloudier conditions, with upwards of 75% of the sky covered by clouds on an average day.



Even if the clouds do not cooperate, seeing a total solar eclipse is truly a once-in-a-lifetime experience! If you are in the path of totality, you may feel the temperature cool a few degrees as the sun becomes increasingly covered. Birds and insects will often become quiet and behave as they would at dusk. When totality arrives, the sun is completely covered! You may even be able to see the chromosphere (a layer of the sun's atmosphere) and the sun's corona (the outer layer of its atmosphere - appears as white streamers or plumes of ionized gas that flow outward into space).

How to Properly Manage the Damage Caused by Brown Marmorated Stink Bugs

Source: Jonathan Larson, UK Extension Entomologist

As their name implies, brown marmorated stink bugs are not just stinky—they can seriously harm crops. You must take action to keep this pest away, regardless of the size of your field or garden.

Although brown marmorated stink bugs have long been present in the eastern part of the state, since 2019 they have started appearing in more counties in Western Kentucky. This invasive species resembles native stink bugs in appearance, but it has a gray belly, and a brown, mottled top along with white bands on its antennae.

These stink bugs will consume any crop. Sweet corn, eggplant, peppers and tomatoes are a few of their favorite foods. They also prey on ornamental trees like redbuds and field crops like soybeans. Their feeding discolors crops, turns their insides corky, and—most importantly—makes them inedible.

Home and commercial growers should take prompt action to control brown marmorated stink bugs because of their capacity to quickly decimate crops.

Here are some quick tips:

- They smell strongly, so you don't want to smash them. Even if you inadvertently crush them, their odor will keep other stink bugs away from your crops. To eliminate them in large quantities, you can sweep them off plants and place them in buckets of soapy water.
- When stink bugs are small, homeowners can control them with insecticidal soap; for larger stink bugs, use products containing pyrethroids. You can also utilize physical exclusion techniques like netting or row covers to keep the stink bugs out of your yard. When using row covers, timing is crucial because you don't want to use them to impede pollination.
- Since the brown marmorated stink bug most frequently infiltrates along field edges, commercial producers should concentrate their monitoring efforts there. In these circumstances, pyrethroid products can also be helpful.
- Throughout the summer, stink bugs will most likely produce two generations, so keep a careful eye on your crops. Early summer is when the first generation will emerge, and late summer or early fall is when the second generation does.
- Brown marmorated stink bugs may begin to appear in your home as the weather cools off and they seek cover from the elements. Toward the end of August, they can also begin to cluster on the exterior of homes. If homeowners spot these stinkbug parties, they can spray them with soapy water and kill them before they end up inside.

For more information on pest control, contact your McCracken County Extension office.

MASTER GARDENER TOOLBOX

HOMESTEADING



Miranda Rudolph, Agriculture & Natural Resource Agent in Graves County, will be educating the public on homesteading. She will be discussing different types of homesteaders, setting up/starting, and tips for success.

APRIL 2ND, 2024 5PM-6PM CST

EXTENSION AGENT FOR
HORTICULTURE

MARY DOSSETT
MARY.DOSSETT@UKY.EDU

**MCCRACKEN COUNTY EXTENSION
SERVICE**

**2025 NEW HOLT RD
(270) 554-9520**

Cooperative
Extension Service

Agriculture and Natural Resources
Family and Consumer Sciences
4-H Youth Development
Community and Economic Development

MARTIN-GATTON COLLEGE OF AGRICULTURE, FOOD AND ENVIRONMENT

Disability programs of Kentucky Cooperative Extension serve all people regardless of economic or social status and will not discriminate on the basis of race, color, ethnic origin, national origin, creed, religion, political belief, sex, sexual orientation, gender identity, gender expression, pregnancy, marital status, genetic information, age, veteran status, physical or mental disability or reprisal or retaliation for prior civil rights activity. If a reasonable accommodation of disability may be available with prior notice, program information may be made available in languages other than English. University of Kentucky, Kentucky State University, U.S. Department of Agriculture, and Kentucky Counties, Cooperating. Lexington, KY 40504



Disability programs
accommodated
with prior notification.

SOLAR ECLIPSE WATCH PARTY

April 8th, 2024

LIMITED ECLIPSE
GLASSES
AVAILABLE

IF INCLEMENT
WEATHER, THE
EVENT IS
CANCELED

11AM - 3PM

ECLIPSE BEGINS 12:42PM
TOTALITY 2:00PM-2:02PM

SCAN FOR MORE
INFORMATION

**MCCRACKEN COUNTY
EXTENSION SERVICE**
2025 NEW HOLT RD
PADUCAH, KY 42001
(270) 554-9520



 Cooperative
Extension Service

**Cooperative
Extension Service**

Agriculture and Natural Resources
Family and Consumer Sciences
4-H Youth Development
Community and Economic Development

MARTIN-GATTON COLLEGE OF AGRICULTURE, FOOD AND ENVIRONMENT

Educational programs of Kentucky Cooperative Extension serve all people regardless of economic or social status and will not discriminate on the basis of race, color, ethnic origin, national origin, creed, religion, political belief, sex, sexual orientation, gender identity, gender expression, pregnancy, marital status, genetic information, age, veteran status, physical or mental disability or reprisal or retaliation for prior civil rights activity. Reasonable accommodation of disability may be available with prior notice. Program information may be made available in languages other than English.
University of Kentucky, Kentucky State University, U.S. Department of Agriculture, and Kentucky Counties, Cooperating.
Lexington, KY 40506



Disabilities
accommodated
with prior notification.

GROUNDING YOGA

INSTRUCTED BY SIERRA IRWIN

**OUTSIDE ON THE LAWN.
IF INCLEMENT WEATHER,
SESSION WILL BE CANCELED.**

SAVANNAH GILBERT
HORTICULTURE ASST.
SAVANNAH.GILBERT@UKY.EDU

**PLEASE BRING A
MAT AND WATER.**




APRIL 9 MAY 14 JUNE 11
11:00 – 12:00

LIMITED SPACE. PLEASE RSVP BY CALLING (270)554-9520

PAT & JIM BROCKENBOROUGH ROTARY HEALTH PARK

LOCATED AT 14TH AND MADISON
IN THE HISTORIC FOUNTAIN AVENUE NEIGHBORHOOD

 **Cooperative
Extension Service**

**Cooperative
Extension Service**

Agriculture and Natural Resources
Family and Consumer Sciences
4-H Youth Development
Community and Economic Development

MARTIN-GATTON COLLEGE OF AGRICULTURE, FOOD AND ENVIRONMENT

Educational programs of Kentucky Cooperative Extension serve all people regardless of economic or social status and will not discriminate on the basis of race, color, ethnic origin, national origin, creed, religion, political belief, sex, sexual orientation, gender identity, gender expression, pregnancy, marital status, genetic information, age, veterans status, physical or mental disability or reprisal or retaliation for prior civil rights activity. Reasonable accommodation of disability may be available with prior notice. Program information may be made available in languages other than English.
University of Kentucky, Kentucky State University, U.S. Department of Agriculture, and Kentucky Counties, Cooperating.
Lexington, KY 40506



 **Disabilities
accommodated
with prior notification.**

GARDENING 101



PEST CONTROL



RAISED BEDS



**ATTRACTING
POLLINATORS**



**COMPANION
PLANTING**



**IMPORTANT
PLANTING DATES**



**APRIL 25TH, 2024
5PM-6PM**



**LOCATION : MCCRACKEN COUNTY EXTENSION SERVICE
2025 NEW HOLT RD.
PADUCAH, KY 42001
(270) 554-9520**

**Want to start a garden but don't know where to start?
Call our office to attend this informative session**

**Cooperative
Extension Service**

Agriculture and Natural Resources
Family and Consumer Sciences
4-H Youth Development
Community and Economic Development

MARTIN-GATTON COLLEGE OF AGRICULTURE, FOOD AND ENVIRONMENT

Educational programs of Kentucky Cooperative Extension serve all people regardless of economic or social status and will not discriminate on the basis of race, color, ethnic origin, national origin, creed, religion, political belief, sex, sexual orientation, gender identity, gender expression, pregnancy, marital status, genetic information, age, veteran status, physical or mental disability or receipt or resolution for prior civil rights activity. Reasonable accommodation of disability may be available with prior notice. Program information may be made available in languages other than English.
University of Kentucky, Kentucky State University, U.S. Department of Agriculture, and Kentucky Counties, Cooperating.
Lexington, KY 40506



Accessibility
accommodated
with prior notification.

McCracken County
Extension Service

Horticulture Walking Club

Meets : Every Wednesday (May 8th– July 31st)

Time : 11AM–12PM

Location : Greenway Trail

*Meet at Skate park entrance



Call our office at
(270) 554-9520 to
sign up!

**Cooperative
Extension Service**

Agriculture and Natural Resources
Family and Consumer Sciences
4-H Youth Development
Community and Economic Development

MARTIN-GATTON COLLEGE OF AGRICULTURE, FOOD AND ENVIRONMENT

Educational programs of Kentucky Cooperative Extension serve all people regardless of economic or social status and will not discriminate on the basis of race, color, ethnic origin, national origin, creed, religion, political belief, sex, sexual orientation, gender identity, gender expression, pregnancy, marital status, genetic information, age, veteran status, physical or mental disability or reprisal or retaliation for prior civil rights activity. Reasonable accommodation of disability may be available with prior notice. Program information may be made available in languages other than English. University of Kentucky, Kentucky State University, U.S. Department of Agriculture, and Kentucky Counties, Cooperating. Lexington, KY 40506



Disabilities
accommodated
with prior notification.